



AMCAN

BEARING & BELTING



AGRICULTURAL BEARINGS

Roulements pour machinerie agricole



www.amcanbearing.com

Los Angeles

Chicago

Dallas

Toronto

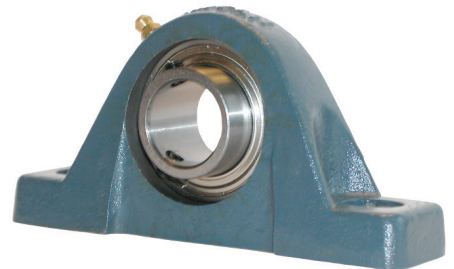
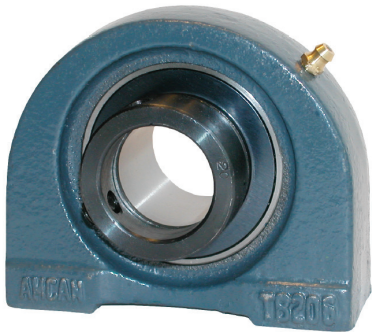
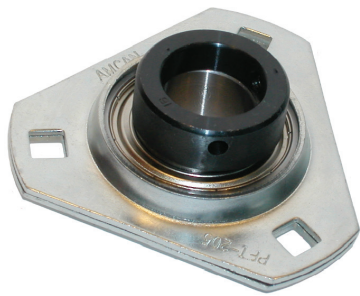
Montréal

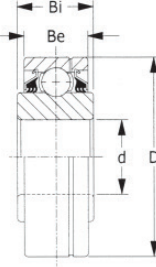
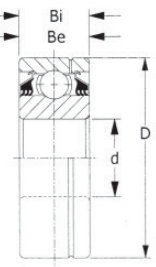
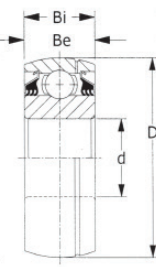
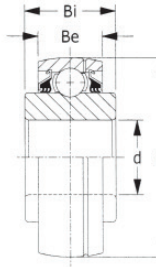
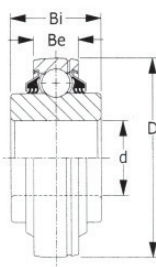
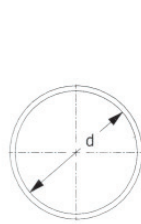
Edmonton

Vancouver

Also available, Pillow Blocks and Flangette

Aussi disponible, Palier à semelle et flangette





TYPE 1

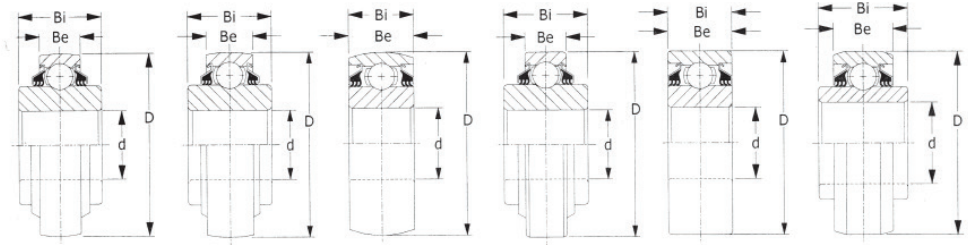
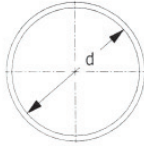
TYPE 2

TYPE 3

TYPE 4

TYPE 5

Bearing Unit No.	TYPE	d		D		Be		Bi		Load Rating,Lbf		Wt.
		nominal	TOL+0/to minus shown	nominal	TOL+0/to minus shown	nominal	TOL+0/to minus shown	nominal	TOL+0/to minus shown	Dynamic	Static	Lbs.
GW209PPB2	3	1.7717 45	0.0005 0.013	3.3465 85.000	0.0006 0.015	1.1880 30.175	0.0050 0.127	1.1880 30.175	0.0050 0.127	7350	4150	1.44
GW209PPB4	3	1.5350 39.000	0.0100 0.254	3.3465 85.000	0.0006 0.015	1.1880 30.175	0.0050 0.127	1.1880 30.175	0.0050 0.127	7350	4150	1.65
GW209PPB11	1	1.7810 45.237	0.0100 0.254	3.3465 85.000	0.0006 0.015	0.8660 22.000	0.0050 0.127	1.4380 36.525	0.0050 0.127	7350	4150	1.37
GW210PPB2	3	1.9380 49.225	0.0005 0.013	3.5433 90.000	0.0006 0.015	1.1880 30.175	0.0050 0.127	1.1880 30.175	0.0050 0.127	7880	4650	1.5
GW210PPB5	3	1.7850 45.339	0.0100 0.254	3.5433 90.000	0.0006 0.015	1.1880 30.175	0.0050 0.127	1.1880 30.175	0.0050 0.127	7880	4650	1.8
GW210PP9	5	1.9450 49.403	0.0070 0.178	3.5433 90.000	0.0006 0.015	0.9060 23.000	0.0050 0.127	1.4380 36.525	0.0050 0.127	7880	4650	1.75
GW211PP2	4	2.1880 55.575	0.0006 0.015	3.9370 100.000	0.0060 0.015	1.3120 33.325	0.0060 0.152	1.3120 33.325	0.0060 0.152	9740	5850	3
GW211PPB2	3	2.1880 55.575	0.0006 0.015	3.9370 100.000	0.0006 0.015	1.3120 33.325	0.0600 0.152	1.3120 33.325	0.0060 0.152	9740	5850	2.62
GW211PPB8	1	2.1880 55.575	0.0006 0.015	3.9370 100.000	0.0006 0.015	0.9840 25.000	0.0600 0.152	1.3120 33.325	0.0060 0.152	9740	5850	1.85
GW211PPB9	1	2.1950 55.753	0.0070 0.178	3.9370 100.000	0.0006 0.015	0.9840 25.000	0.0060 0.152	1.5620 39.675	0.0060 0.152	9740	5850	2.02
GW211PPB10	3	1.9380 49.225	0.0006 0.015	3.9370 100.000	0.0006 0.015	1.3120 33.325	0.0060 0.152	1.3120 33.325	0.0060 0.152	9740	5850	2.26
GW211PPB13	1	1.7850 45.339	0.0100 0.254	3.9370 100.000	0.0006 0.015	0.9840 25.000	0.0050 0.127	1.3120 33.325	0.0060 0.152	9740	5850	2.02
GW211PPB14	1	2.0150 51.181	0.0100 0.254	3.9370 100.000	0.0006 0.015	0.9840 25.000	0.0060 0.152	1.3120 33.325	0.0060 0.152	9740	5850	2
GW211PP25	5	1.7800 45.212	0.0050 0.127	3.9300 100.000	0.0006 0.015	1.3120 33.325	0.0060 0.152	1.7500 44.450	0.0060 0.152	9740	5850	2.44
GW214PP2	4	2.7559 70.000	0.0006 0.015	4.9213 125.000	0.0008 0.020	1.5620 39.675	0.0060 0.152	1.5620 39.675	0.0060 0.152	14000	8800	4.19
GW214PPB2	3	2.7559 70.000	0.0006 0.015	4.9213 125.000	0.0008 0.020	1.5620 39.675	0.0060 0.152	1.5620 39.675	0.0060 0.152	14000	8800	3.96
GW214PPB3	3	1.9380 49.225	0.0006 0.015	4.9213 125.000	0.0008 0.020	1.5620 39.675	0.0060 0.152	1.5620 39.675	0.0060 0.152	14000	8800	4.24
GW214PPB5	2	2.7559 70.000	0.0006 0.015	4.9213 125.000	0.0008 0.020	1.5620 39.675	0.0060 0.152	2.4380 61.925	0.0060 0.152	14000	8800	4.75
GW214PPB6	1	2.6881 68.278	0.0006 0.015	4.9213 125.000	0.0008 0.020	1.1024 28.000	0.0060 0.152	2.6875 68.263	0.0060 0.152	14000	8800	5.14



TYPE 1

TYPE 2

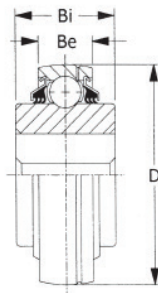
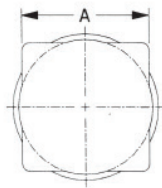
TYPE 3

TYPE 4

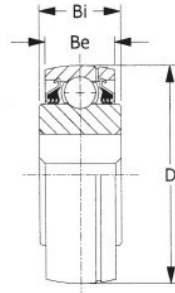
TYPE 5

TYPE 6

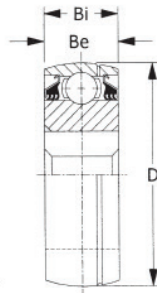
Bearing Unit No.	TYPE	d		D		Be		Bi		Load Rating,Lbf		Wt. Lbs.
		nominal	TOL+0/to minus shown	nominal	TOL+0/to minus shown	nominal	TOL+0/to minus shown	nominal	TOL+0/to minus shown	Dynamic	Static	
		W208PPB2	1	1.5005 38.113	0.0005 0.013	3.1496 80.000	0.0005 0.013	0.7090 18.000	0.0050 0.127	1.6880 42.875	0.0050 0.127	7340
W208PPB7	2	1.1880 30.175	0.0005 0.013	3.1496 80.000	0.0005 0.013	0.7090 18.000	0.0050 0.127	1.1880 30.175	0.0050 0.127	7340	3650	1.41
W208PP10	4	1.5005 38.113	0.0005 0.013	3.1496 80.000	0.0005 0.013	0.827 21.000	0.005 0.127	1.688 42.875	0.005 0.127	7340	3650	1.5
W208PPB10	1	1.5005 38.113	0.0005 0.013	3.1496 80.000	0.0005 0.013	0.8270 21.000	0.0050 0.127	1.6880 42.875	0.0050 0.127	7340	3650	1.59
W208PPB23	2	1.5005 38.113	0.0005 0.013	3.1496 80.000	0.0005 0.013	1.1880 30.175	0.0050 0.127	1.6880 42.875	0.0050 0.127	7340	3650	1.5
W209PPB2	3	1.7717 45.000	0.0005 0.013	3.3460 85.000	0.0006 0.015	1.1880 30.175	0.0050 0.127	1.1880 30.175	0.0050 0.127	7350	4150	1.45
W209PPB4	3	1.5350 39.000	0.0100 0.254	3.3460 85.000	0.0060 0.015	1.1880 30.175	0.0050 0.127	1.1880 30.175	0.0050 0.127	7350	4150	1.65
W210PP2	5	1.9380 49.225	0.0005 0.013	3.5433 90.000	0.0006 0.015	1.1880 30.175	0.0050 0.127	1.1880 30.175	0.0050 0.127	7880	4650	1.69
W210PPB2	3	1.9380 49.225	0.0005 0.013	3.5430 90.000	0.0006 0.015	1.1880 30.175	0.0050 0.127	1.1880 30.175	0.0050 0.127	7880	4650	1.56
W210PPB5	3	1.7850 45.339	0.0100 0.254	3.5430 90.000	0.0006 0.015	1.1880 30.175	0.0050 0.127	1.1880 30.175	0.0050 0.127	7880	4650	1.75
W210PP8	5	1.5300 38.862	0.0100 0.254	3.5433 90.000	0.0006 0.015	1.1880 30.175	0.0050 0.127	1.1880 30.175	0.0050 0.127	7880	4650	1.97
W210PPB9	2	1.9448 49.400	0.0070 0.178	3.5433 90.000	0.0006 0.015	0.9055 23.000	0.0050 0.127	1.4382 36.530	0.0050 0.127	7880	4650	1.91
W211PP2	5	2.1880 55.575	0.0006 0.015	3.9370 100.000	0.0006 0.015	1.3120 33.325	0.0050 0.127	1.3120 33.325	0.0060 0.152	9740	5850	2.33
W211PPB2	3	2.1880 55.575	0.0006 0.015	3.9370 100.000	0.0006 0.015	1.3120 33.325	0.0050 0.127	1.3120 33.325	0.0060 0.152	9740	5850	3
W211PPB4	6	2.1880 55.575	0.0006 0.015	3.9370 100.000	0.0006 0.015	1.3120 33.325	0.0050 0.127	2.1870 55.500	0.0060 0.152	9740	5850	3.63
W214PP2	5	2.7559 70.000	0.0006 0.015	4.9213 125.000	0.0008 0.020	1.5620 39.675	0.0050 0.127	1.5620 39.675	0.0060 0.152	14000	8800	4.19
W214PPB2	3	2.7559 70.000	0.0006 0.015	4.9213 125.000	0.0008 0.020	1.5620 39.675	0.0050 0.127	1.5620 39.675	0.0060 0.152	14000	8800	3.96
W214PPB9	3	2.7660 70.256	0.0010 0.025	4.9213 125.000	0.0008 0.020	1.1020 28.000	0.0050 0.127	1.7500 44.450	0.0060 0.152	14000	8800	3.96



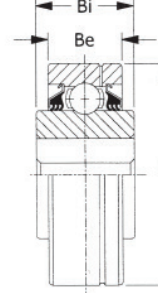
TYPE 1



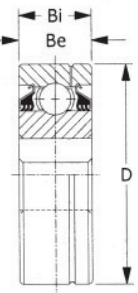
TYPE 2



TYPE 3

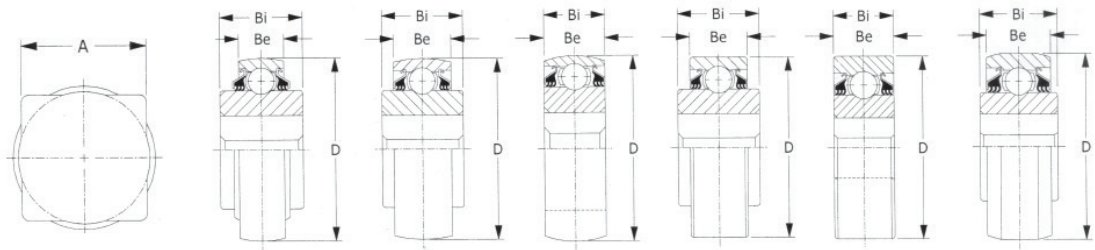


TYPE 4



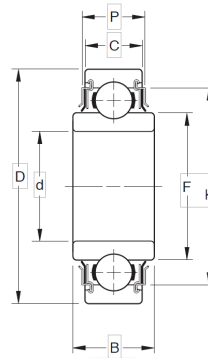
TYPE 5

Bearing Unit No.	TYPE	Shaft Size	Max d	A		R	D		Be nominal	Bi nominal	Be&Bi TOL+0/ to minus	Load Rating,Lbf		Wt. Lbs.
				nominal	Tol. + / -		nominal	TOL+0/to minus shown				Dynamic	Static	
GW208PPB5	1	1 1/8 28.575	1.2360 31.394	1.1800 29.972	0.0050 0.127	0.1000 0.2540	3.1496 80.000	0.0005 0.013	0.8270 21.000	1.4380 36.525	0.0050 0.127	7340	3650	1.5
GW208PPB6	1	1 25.400	1.0940 27.788	1.0300 26.162	0.0050 0.127	0.1000 0.2540	3.1496 80.000	0.0005 0.013	0.8270 21.000	1.4380 36.525	0.005 0.127	7340	3650	1.75
GW208PPB8	2	1 1/8 28.575	1.2360 31.394	1.1800 29.972	0.0050 0.127	0.1000 0.2540	3.1496 80.000	0.0005 0.013	1.1880 30.175	1.4380 36.525	0.005 0.127	7340	3650	1.8
GW208PP17	4	1 1/8 28.575	1.2360 31.394	1.1800 29.972	0.0050 0.127	0.1000 0.2540	3.3755 85.738	0.0005 0.013	1.1880 30.175	1.4380 36.525	0.005 0.127	7340	3650	2
GW208PPB17	2	1 1/8 28.575	1.2360 31.394	1.1800 29.972	0.0050 0.127	0.1000 0.2540	3.3755 85.738	0.0005 0.013	1.1880 30.175	1.4380 36.525	0.005 0.127	7340	3650	2
GW209PPB5	2	1 1/4 31.75	1.3700 34.798	1.2900 32.776	0.0050 0.127	0.1000 2.540	3.3465 85.000	0.0006 0.015	1.1880 30.175	1.4380 36.525	0.0050 0.127	7350	4150	1.8
GW209PPB8	1	1 1/4 31.750	1.3700 34.798	1.2900 32.776	0.0050 0.127	0.1000 2.540	3.3465 85.000	0.0006 0.015	0.8660 22.000	1.4380 36.525	0.0050 0.127	7350	4150	1.7
GW210PP4	5	1 1/8 28.575	1.2360 31.394	1.1800 29.972	0.0050 0.127	0.1000 2.540	3.5433 90.000	0.0006 0.015	1.1880 30.175	1.1880 30.175	0.0050 0.127	7880	4650	2.3
GW210PPB4	3	1 1/8 28.575	1.2360 31.394	1.1800 29.972	0.0050 0.127	0.1000 2.540	3.5433 90.000	0.0006 0.015	1.1880 30.175	1.1880 30.175	0.0050 0.127	7880	4650	1.8
GW211PP3	5	1 1/2 38.100	1.6220 41.199	1.5311 38.890	0.0050 0.127	0.1000 2.540	3.9370 100.000	0.0006 0.015	1.1320 33.325	1.3120 33.325	0.0060 0.152	9740	5850	2.8
GW211PPB3	3	1 1/2 38.100	1.6220 41.199	1.5311 38.890	0.0050 0.127	0.1000 2.540	3.9370 100.000	0.0006 0.015	1.1320 33.325	1.3120 33.325	0.0060 0.152	9740	5850	2.7
GW211PP5	4	1 1/2 38.100	1.6220 41.199	1.5311 38.890	0.0050 0.127	0.1000 2.540	4.0000 101.600	0.0006 0.015	1.4380 36.525	1.7500 44.450	0.0060 0.152	9740	5850	2.7
GW211PP17	4	1 1/2 38.1	1.6220 41.199	1.5311 38.890	0.0050 0.127	0.1000 2.540	3.9370 100.000	0.0006 0.015	1.3120 33.325	1.7500 44.450	0.0060 0.152	9740	5850	2.6
GW211PPB17	1	1 1/2 38.1	1.6220 41.199	1.5311 38.890	0.0050 0.127	0.1000 2.540	3.9370 100.000	0.0006 0.015	1.3120 33.325	1.7500 44.450	0.0060 0.152	9740	5850	2.6
GW214PPB4	3	2 50.8	2.1610 54.889	2.0551 52.200	0.0050 0.127	0.1000 2.540	4.9213 125.000	0.0008 0.020	1.5620 39.675	1.5620 39.675	0.0060 0.152	14000	8800	4.8
GW216PP2	4	2 1/4 57.150	2.6850 68.200	2.3150 58.800	0.0050 0.127	0.1000 2.540	5.5118 140.000	0.0008 0.020	1.1810 30.000	2.5000 63.500	0.0600 0.152	16280	10400	6.3

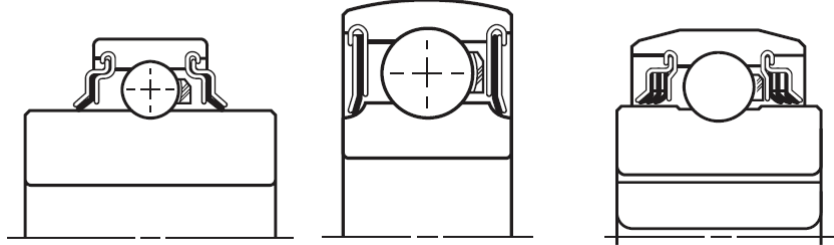


TYPE 1 TYPE 2 TYPE 3 TYPE 4 TYPE 5 TYPE 6

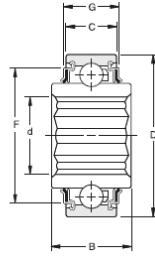
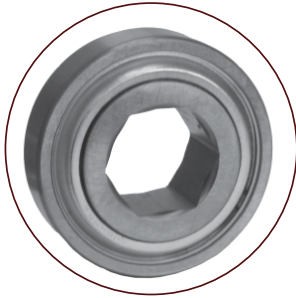
Bearing Unit No.	TYPE	Shaft Size	Max d	A		R	D		Be nominal	Bi nominal	Be&Bi TOL+0/ to minus	Load Rating,Lbf		Wt. Lbs.
				nominal	Tol. +/-		nominal	TOL+0/to minus shown				Dynamic	Static	
W208PP5	4	1.125 28.575	1.236 31.394	1.18 29.97	0.005 0.127	0.1 2.54	3.1496 80	0.0005 0.013	0.709 18	1.438 36.52	0.005 0.127	7340	3650	1.5
W208PPB5	1	1.125 28.575	1.236 31.394	1.18 29.97	0.005 0.127	0.1 2.54	3.1496 80	0.0005 0.013	0.709 18	1.438 36.52	0.005 0.127	7340	3650	1.47
W208PP6	4	1 25.4	1.094 27.788	1.03 26.162	0.005 0.127	0.1 2.54	3.1496 80	0.0005 0.013	0.709 18	1.438 36.52	0.005 0.127	7340	3650	1.62
W208PPB6	1	1 25.4	1.094 27.788	1.03 26.162	0.005 0.127	0.1 2.54	3.1496 80	0.0005 0.013	0.709 18	1.438 36.52	0.005 0.127	7340	3650	1.59
W208PP8	4	1.125 28.575	1.236 31.394	1.18 29.972	0.005 0.127	0.1 2.54	3.1496 80	0.0005 0.013	1.188 30.175	1.438 36.52	0.005 0.127	7340	3650	1.66
W208PPB8	2	1.125 28.575	1.236 31.394	1.18 29.972	0.005 0.127	0.1 2.54	3.1496 80	0.0005 0.013	1.188 30.175	1.438 36.52	0.005 0.127	7340	3650	1.66
W208PPB9	2	1 25.4	1.094 27.788	1.03 26.162	0.005 0.127	0.1 2.54	3.1496 80	0.0005 0.013	1.188 30.175	1.438 36.52	0.005 0.127	7340	3650	1.74
W208PPB11	6	0.875 22.225	0.961 24.441	0.905 23	0.005 0.127	0.1 2.54	3.376 85.75	0.0005 0.013	1.188 30.175	1.438 36.52	0.005 0.127	7340	3650	2.05
W208PPB12	6	1.125 28.575	1.236 31.394	1.18 29.972	0.005 0.127	0.1 2.54	3.376 85.75	0.001 0.025	1.188 30.175	1.438 36.52	0.005 0.127	7340	3650	1.62
W208PPB13	1	0.875 22.225	0.961 24.441	0.905 23	0.005 0.127	0.1 2.54	3.1496 80	0.0005 0.013	0.709 18	1.438 36.52	0.005 0.127	7340	3650	1.62
W209PPB5	2	1 1/4 31.750	1.3700 34.798	1.2900 32.766	0.0050 0.127	0.1000 25.400	3.3465 85.000	0.0005 0.013	1.1880 30.175	1.4380 36.520	0.0050 0.127	7350	4150	1.75
W209PPB7	6	1 1/4 31.750	1.3700 34.798	1.2900 32.766	0.0050 0.127	0.1000 2.540	3.3760 85.750	0.0005 0.013	1.1880 30.175	1.4375 36.510	0.0050 0.127	7350	4150	1.8
W210PP4	5	1.125 28.575	1.236 31.394	1.18 29.972	0.005 0.127	0.1 2.54	3.5433 90	0.0005 0.013	1.188 30.175	1.188 30.15	0.005 0.127	7880	4650	1.92
W210PPB4	3	1.125 28.575	1.236 31.394	1.18 29.972	0.005 0.127	0.1 2.54	3.5433 90	0.0005 0.013	1.188 30.175	1.188 30.15	0.005 0.127	7880	4650	2.11
W210PPB6	2	1.125 28.575	1.236 31.394	1.18 29.972	0.005 0.127	0.1 2.54	3.5433 90	0.0005 0.013	1.188 30.175	1.438 36.52	0.005 0.127	7880	4650	2.11
W211PP3	5	1 1/2 38.100	1.6220 41.199	1.5311 38.890	0.0050 0.127	0.1000 2.540	3.9370 100.000	0.0006 0.013	1.3120 33.324	1.3120 33.324	0.0600 0.152	9740	5850	2.79
W211PPB3	3	1 1/2 38.100	1.6220 41.199	1.5311 38.890	0.0050 0.127	0.1000 2.540	3.9370 100.000	0.0006 0.015	1.3120 33.324	1.3120 33.324	0.0060 0.152	9740	5850	2.66
W211PP5	4	1 1/2 38.100	1.6220 41.199	1.5311 38.890	0.0050 0.127	0.1000 2.540	4.0000 101.600	0.0006 0.015	1.4380 36.520	1.7500 44.450	0.0060 0.152	9740	5850	3.38
W211PPB6	6	1 1/2 38.100	1.6220 41.199	1.5311 38.890	0.0050 0.127	0.1000 2.540	4.0770 103.556	0.0010 0.025	1.4380 36.520	1.7500 44.450	0.0060 0.152	9740	5850	4.05



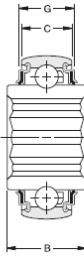
Bearing Unit No.	d		D		Bi		Be		W		W1		r	Load Rating Lbf		Wt.
	nominal	TOL +0/to minus shown	nominal	TOL+0/to minus shown	nominal	TOL+0/to minus shown	nominal	TOL+0/to minus shown	nominal	TOL+0/to minus shown	nominal	TOL+0/to minus shown		Dynamic	Static	
	203KR2	0.6253	0.0003	1.5748	0.0005	0.5510	0.0050	0.4724	0.0050	0.9620	0.0008	~		~	0.02	2160
	15.883	0.008	40.000	0.013	14.000	0.127	12.000	0.127	24.435	0.020	~	~	0.610			
BB203KRR2	0.6400	0.0050	1.5748	0.0005	0.7200	0.0050	0.4724	0.0050	0.9620	0.0008	~	~	0.024	2160	889	0.16
	16.260	0.127	40.000	0.013	18.288	0.127	12.000	0.127	24.435	0.020	~	~	0.610			
203KRR2	0.6400	0.005	1.5748	0.0005	0.72	0.0050	0.4724	0.0050	0.9620	0.0008	~	~	0.024	2160	889	0.16
	16.260	0.127	40.000	0.013	18.288	0.127	12.000	0.127	24.435	0.020	~	~	0.610			
203KRR2FD	0.6400	0.0050	1.5748	0.0005	0.7200	0.0050	0.4724	0.0050	0.9620	0.0008	~	~	0.024	2160	889	0.17
	16.260	0.127	40.000	0.013	18.288	0.127	12.000	0.127	24.435	0.020	~	~	0.610			
203KRR5	0.5150	0.0050	1.5748	0.0005	0.7200	0.0050	0.4724	0.0050	0.9620	0.0008	~	~	0.024	2160	889	0.22
	13.081	0.127	40.000	0.013	18.288	0.127	12.000	0.127	24.435	0.020	~	~	0.610			
203KRR7	0.6693	0.0003	1.5748	0.0005	0.6540	0.0050	0.4724	0.0050	0.9620	0.0008	~	~	0.024	2160	889	0.18
	17.000	0.008	40.000	0.013	16.612	0.127	12.000	0.127	24.435	0.020	~	~	0.610			
204KR2	0.7505	0.0005	1.7805	0.0005	0.6100	0.0050	0.6100	0.0050	1.1310	0.0008	~	~	0.039	2900	1410	0.28
	19.063	0.013	45.225	0.013	15.494	0.127	15.494	0.127	28.727	0.020	~	~	0.991			
204KRR3	0.7874	0.0004	1.8504	0.0005	0.6990	0.0050	0.5510	0.0050	1.1310	0.0008	~	~	0.039	2900	1410	0.25
	20.000	0.010	47.000	0.013	17.755	0.127	14.000	0.127	28.727	0.020	~	~	0.991			
205KR4	1.0005	0.0005	2.0472	0.0005	1.0000	0.0050	0.5910	0.0050	1.3310	0.0008	1.6800	0.0008	0.039	3150	1610	0.35
	25.413	0.013	52.000	0.013	25.400	0.127	15.000	0.127	33.807	0.020	42.672	0.020	0.991			
206KR7	1.1811	0.0004	2.4409	0.0005	0.9450	0.0050	0.6300	0.0050	1.5860	0.0008	2.0500	0.0008	0.039	4370	2320	0.56
	30.000	0.010	62.000	0.013	24.000	0.127	16.000	0.127	40.284	0.020	52.070	0.020	0.991			
206KRR8	1.1811	0.0004	2.4409	0.0005	0.9450	0.0050	0.6300	0.0050	1.5390	0.0008	2.0500	0.0008	0.039	4370	2320	0.56
	30.000	0.010	62.000	0.013	24.000	0.127	16.000	0.127	39.091	0.020	52.070	0.020	0.991			
207KRR	1.3780	0.0005	2.8346	0.0005	0.9840	0.0050	0.6690	0.0050	1.8480	0.0008	2.3760	0.0008	0.039	5770	3150	0.77
	35.000	0.013	72.000	0.013	25.000	0.127	17.000	0.127	46.939	0.020	60.350	0.020	0.991			
208KRR2	1.5748	0.0005	3.1496	0.0005	1.0630	0.0050	0.8270	0.0050	2.0570	0.0008	2.6950	0.0008	0.039	7340	3650	1.04
	40.000	0.013	80.000	0.013	27.000	0.127	21.000	0.127	52.248	0.020	68.453	0.020	0.991			



FARM	BORE		O.D.		OUTER RING		INNER RING		DESCRIPTION OF SPECIALITIES
	d		D		WIDTH - B		WIDTH - C		
	Inch	mm	Inch	mm	Inch	mm	Inch	mm	
RX84	0.6945	17.640	2.1248	53.970	0.6248	15.870	0.7949	20.190	Hex bore, attached flange. Trash seals
X365	1.0000	25.400	2.0000	50.800	0.5906	15.000	0.7100	18.034	Snap ring. Trash seals.
202NPP9	0.5050	12.827	1.5000	38.100	0.4331	11.000	0.4331	11.000	O.D. turned to 3/4 radius. Trash seals
202RRE	0.5906	15.000	1.3780	35.000	0.4331	11.000	0.8800	22.352	Special bore, extended inner ring. Trash seals
203JD	0.6693	17.000	1.5748	40.000	0.4724	12.000	0.5512	14.000	Inner ring extended one side. Trash seals
203KRR3	0.6280	15.951	2.0000	50.800	0.5906	15.000	0.5906	15.000	Thick outer ring, two inch O.D. Trash seals
203KRR6	0.6400	16.256	1.8504	47.000	0.4724	12.000	0.7200	18.288	Thick outer ring, extended inner ring. Trash seals
203NPP9	0.6260	15.900	1.5784	40.000	0.5100	12.950	0.5100	12.950	Special bore, special width. Trash seals
Z9504-2RST	0.7500	19.050	1.7805	45.225	0.6100	15.494	0.6100	15.494	Basic 6204-2RS with 3/4 bore and 6100 width. Trash seals
204KRD4	0.6300	16.000	1.8504	47.000	0.5512	14.000	0.6890	17.500	Special bore. Trash seals.
204KRR14	0.6310	16.027	1.8504	47.000	0.5906	15.000	0.7200	18.288	Special ID, width. Trash seals.
204RR8	0.6310	16.027	1.7805	45.225	0.6100	15.494	0.6100	15.494	Special bore, special OD, special width. Trash seals
204RY2	0.6310	16.027	1.7805	45.225	0.6100	15.494	0.7350	18.669	Gothic arch race. Double lip trash seal extended side, single lip trash seal opposite.
205KRP2	0.7560	19.202	2.0472	52.000	0.5906	15.000	0.8310	21.107	Special bore, triple lip trash seal extended side, single lip side opposite.
205KR3	0.7510	19.075	2.0472	52.000	0.7000	17.780	0.6400	16.256	Special shroud seal one side only.
205KP6	0.7560	19.202	2.0472	52.000	0.7000	17.780	0.9210	23.393	Inner ring extended one side, inset side opposite. Triple lip extended side, open side opposite
205KRR6	0.5150	13.081	2.0472	52.000	0.5906	15.000	1.3750	34.925	Special bore, extended inner ring. Trash seals.
205KRR7	0.5120	13.000	2.0472	52.000	0.5902	15.000	1.5000	38.100	Inner ring extended both sides, bearing not centered on inner ring. Trash seals
G205PPB7	0.9375	23.813	2.0472	52.000	0.5910	15.000	1.3780	35.000	Same as 205PPB7 with grease groove.
205PPB7	0.9375	23.813	2.0472	52.000	0.5910	15.000	1.3780	35.000	Beveled OD. Triple lip seals.
205PP8	0.5104	12.964	2.0472	52.000	0.5910	15.000	1.3750	34.925	Special bore, extended inner ring. Triple lip seals.
205PP9	0.7560	19.202	2.0472	52.000	0.5910	15.000	1.3750	34.925	Special bore, extended inner ring. Triple lip seals.
205PP10	0.6300	16.000	2.0472	52.000	0.5910	15.000	1.3750	34.925	Special bore, extended inner ring. Triple lip seals.
205PP12	0.6350	16.129	2.0472	52.000	0.5902	15.000	1.5000	38.100	Inner ring extended both sides, bearing not centered on inner ring. Triple lip seals
206KRRB	0.7580	19.250	2.4409	62.000	0.6300	16.000	0.9450	24.000	Special bore, extended inner ring. Triple lip seals.
206PD2	1.2500	31.750	2.5625	65.088	0.6693	17.000	0.7293	18.524	Special O.D., extended inner ring. Trash seals.
207KYY	1.3780	35.000	2.8346	72.000	0.6693	17.000	0.9843	25.000	Extended inner ring. Double lip seal.
FHR208-25CD	1.5625	39.688	3.1496	80.000	0.7087	18.000	1.1890	30.200	Back side extended slightly. Trash seals.
W213-8445	2.1880	55.575	4.7244	120.00	1.1380	28.905	2.1780	55.550	Extended inner ring both sides. Open, no seals or shields
88120-C4	0.7874	20.000	1.8504	47.000	0.5510	14.000	0.8190	20.800	Extended inner ring both sides. Trash seals.
88128R	1.5312	38.892	3.1496	80.000	0.8268	21.000	1.0830	27.500	Bearing supplied with an axel ring



TYPE 1



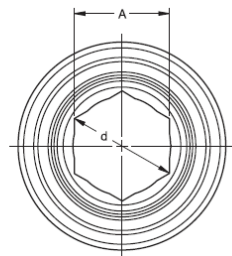
TYPE 2



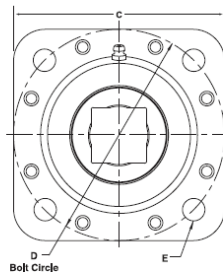
TYPE 3



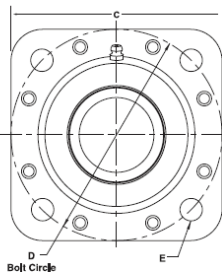
TYPE 4



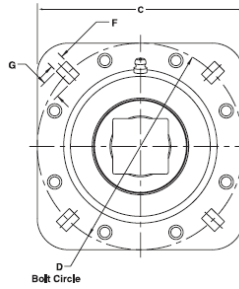
Flanged Disc Units	TYPE	Hex Shaft Size (in)	B		A		B & A		D		Be		Bi		Be&Bi		W		Load Rating,Lbf		Wt. Lbs.
			nominal	nominal	TOL+0/ to minus	nominal	TOL+0/to minus shown	nominal	nominal	TOL+0/ to minus	nominal	nominal	TOL+0/ to minus	nominal	TOL+0/to minus shown	Dynamic	Static				
			202KRR3	1	9/16	0.6480 16.459	0.5630 14.3	0.0050 0.127	1.3780 35.000	0.0005 0.013	0.4330 11.000	0.5120 13.000	0.0050 0.127	0.9720 24.689	0.0050 0.127	2160	1000	0.12			
204KPP2	3	11/16	0.7960 20.218	0.6950 17.653	0.0050 0.127	1.8504 47.000	0.0005 0.013	0.5510 14.000	0.8250 20.955	0.0050 0.127	1.1340 28.804	0.0050 0.127	2900	1000	0.34						
204KRR2	1	11/16	0.7960 20.218	0.6950 17.653	0.0050 0.127	1.8504 47.000	0.0005 0.013	0.5510 14.000	0.825 20.955	0.005 0.127	1.1340 28.804	0.005 0.127	2900	1410	0.32						
204KRRB2	2	11/16	0.7960 20.218	0.6950 17.653	0.0050 0.127	1.8504 47.000	0.0005 0.013	0.5510 14.000	0.8250 20.955	0.005 0.127	1.1340 28.804	0.005 0.127	2900	1410	0.32						
205KPP2	3	7/8	1.0100 25.654	0.8760 22.250	0.0050 0.127	2.0472 52.000	0.0005 0.013	0.5910 15.000	1.0000 25.400	0.005 0.127	1.3340 33.883	0.005 0.127	3150	1610	0.47						
205KRR2	1	7/8	1.0100 25.654	0.8760 22.250	0.0050 0.127	2.0472 52.000	0.0005 0.013	0.5910 15.000	1.0000 25.400	0.005 0.127	1.3340 33.883	0.005 0.127	3150	1610	0.44						
205KPPB2	4	7/8	1.0100 25.654	0.8760 22.250	0.0050 0.127	2.0472 52.000	0.0005 0.013	0.5910 15.000	1.0000 25.400	0.005 0.127	1.3340 33.883	0.005 0.127	3150	1610	0.47						
205KRRB2	2	7/8	1.0100 25.654	0.8760 22.250	0.0050 0.127	2.0472 52.000	0.0005 0.013	0.5910 15.000	1.0000 25.400	0.005 0.127	1.3340 33.883	0.005 0.127	3150	1610	0.44						
206KRR6	1	1	1.1520 29.261	1.0010 25.425	0.0050 0.127	2.4409 620.000	0.0005 0.013	0.6300 16.000	0.9450 24.000	0.005 0.127	1.5940 40.488	0.005 0.127	4370	2320	0.75						
206KRRB6	2	1	1.1520 29.261	1.0010 25.425	0.0050 0.127	2.4409 62.000	0.0005 0.013	0.6300 16.000	0.9450 24.000	0.005 0.127	1.5940 40.488	0.005 0.127	4370	2320	0.75						
G207KPPB2	4	1 1/8	1.2980 32.969	1.1260 28.600	0.0050 0.127	2.8346 72.000	0.0005 0.013	0.7480 19.000	1.4840 37.694	0.005 0.127	1.8430 46.812	0.005 0.127	5770	3150	1.1						
207KRRB9	2	1 1/8	1.2980 32.969	1.1260 28.600	0.0050 0.127	2.8346 72.000	0.0005 0.013	0.6690 17.000	1.4840 37.694	0.005 0.127	1.8430 46.812	0.005 0.127	5770	3150	1.0						
207KRRB12	2	1 1/8	1.2980 32.969	1.1260 28.600	0.0050 0.127	2.8346 72.000	0.0005 0.013	0.6690 17.000	0.9840 25.000	0.005 0.127	1.8430 46.812	0.005 0.127	5770	3150	0.87						
GW208PPB22	4	1 1/4	1.4500 36.83	1.2510 31.877	0.0050 0.127	3.1496 80.000	0.0005 0.013	0.8270 21.000	1.4380 36.520	0.005 0.127	2.0840 52.934	0.005 0.127	7340	3650	1.5						
W208KRRB6	2	1 3/8	1.5870 40.301	1.3760 34.950	0.0050 0.127	3.1496 80.000	0.0005 0.013	0.8270 21.000	1.4380 36.520	0.005 0.127	2.0840 52.934	0.005 0.127	7340	3650	1.31						
W208PPB16	4	1 1/4	1.4500 36.652	1.2510 31.775	0.0050 0.127	3.1496 80.000	0.0005 0.013	0.7090 18.000	1.4380 36.520	0.005 0.127	2.0840 52.934	0.005 0.127	7340	3650	1.45						
G209KPPB2	4	1 1/2	1.7300 43.942	1.5010 38.125	0.0050 0.127	3.3465 85.000	0.0006 0.015	0.7480 19.000	1.1810 30.000	0.005 0.127	2.3050 58.547	0.005 0.127	7350	4150	1.26						
209KRRB2	2	1 1/2	1.7300 43.942	1.5010 38.125	0.0050 0.127	3.3465 85.000	0.0006 0.015	0.7480 19.000	1.1810 30.000	0.005 0.127	2.3050 58.547	0.005 0.127	7350	4150	1.27						
GC211-32NLC	3	1 3/4	2.0200 51.308	1.7510 44.475	0.0050 0.127	3.9370 100.000	0.0006 0.015	0.9840 25.000	2.2500 57.150	0.006 0.152	2.7461 69.750	0.005 0.127	9740	5850	3.35						



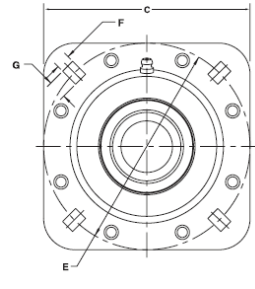
TYPE 1



TYPE 2



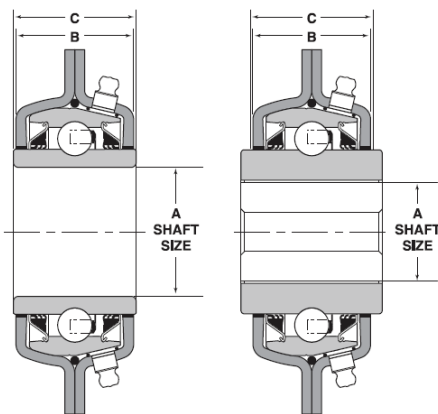
TYPE 3



TYPE 4

UNIT No.	TYPE	SHAFT DIAMETER	A	B Mini-Frame Opening	C	D	E	F	G
ST491A	2	1 3/4 RD	1.687	4.000	5.000	5.000	0.531	~~	~~
ST491B	4	1 1/2 RD	1.687	4.000	5.000	5.000	~~	0.531	0.687
FD209-1 1/8SQ	3	1 1/8 SQ	1.687	4.000	5.000	5.000	~~	531	0.687
FD209-1 1/4SQ	3	1 1/4 SQ	1.687	4.000	5.000	5.000	~~	0.531	0.687
FD210-1 1/8SQ	1	1 1/8 SQ	1.750	4.000	5.000	5.000	0.531	~~	~~
FD211-1 1/2SQ	3	1 1/2 SQ	2.000	4.000	5.500	5.500	~~	0.531	0.687
FD211-1 3/4RD	2	1 3/4 RD	2.187	4.000	5.500	5.500	0.531	~~	~~
FD211-1 3/4HX	~~	1 3/4 HX	2.188	4.000	5.500	5.500	0.531	~~	~~
FD211-1 15/16RD	2	1 15/16 RD	2.187	4.000	5.500	5.500	0.531	~~	~~
FD211-1 15/16RDC	~~	1 15/16 RD	2.125	4.000	5.500	5.500	0.531	~~	~~
FD211-2 3/16RD	2	2 3/16RD	2.187	4.000	5.500	5.500	0.531	~~	~~

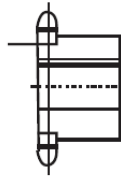
Flange Disc Interchange Chart



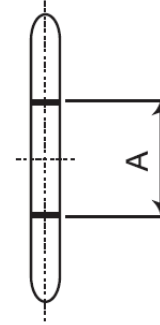
Unit No.	FAFNIR	BCA
ST491A	491A	FD - 209 - RA
ST491B	DHU 1 1/2R - 209	FD - 209 - RB
FD209-1 1/8SQ	DHU 1 1/8S - 209	FD - 209 - RM
FD209-1 1/4SQ	DHU 1 1/4S - 209	FD - 209 - RK
FD210-1 1/8SQ	~~~~	FD - 210 - R
FD211-1 1/2SQ	DHU 1 1/2S - 211	FD - 211 - RM
FD211-1 3/4RD	DHU 1 3/4R - 211	FD - 211 - RE
FD211-1 3/4HX	~~~~	FD - 211 - RKB
FD211-1 15/16RD	~~~~	FD - 211 - RK
FD211-1 15/16RDC	~~~~	FD - 211 - RJA
FD211-2 3/16RD	DHU 2 3/16R - 211	FD - 211 - RB



The larger sprockets are to be welded as Shown.

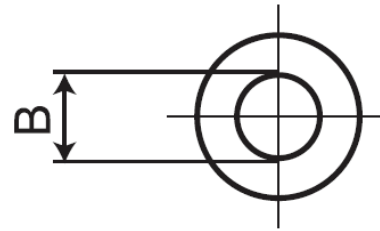
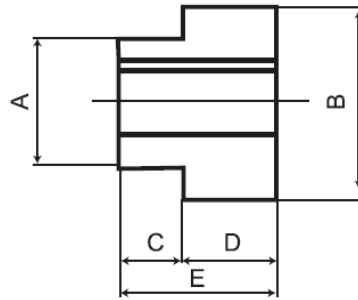


The smaller sprockets are to be welded as shown as the weld will not interfere with the chain.



V Series = 1 1/8"
W Series = 1 5/8"
X Series = 2"
XX Series = 2"
Y Series = 2 3/4"

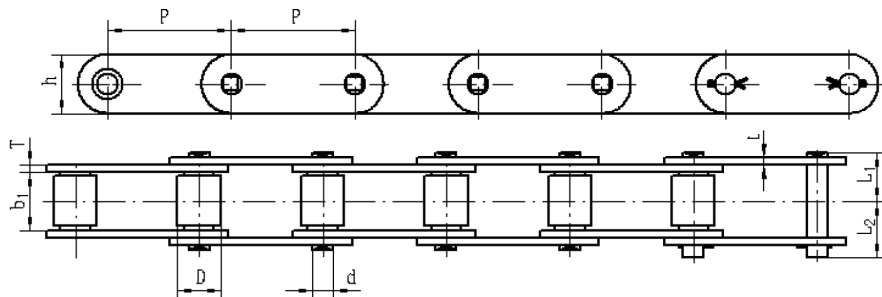
No. of Teeth	ANSI-35 - Chain Pitch 3/8	ANSI-41 DIN ISO Nr.085 Chain Pitch 1/2	ANSI-40 DIN ISO Nr.08A Chain Pitch 1/2	ANSI-50 DIN ISO Nr.10A Chain Pitch 5/8	ANSI-60 DIN ISO Nr.12A Chain Pitch 3/4	ANSI-80 DIN ISO Nr.16A Chain Pitch 1	ANSI-100 DIN ISO Nr.20A Chain Pitch 1-1/4
9	-	-	-	-	60 V 09	80 W 09	-
10	-	-	-	50 V 10	60 V 10	80 W 10	100 X 10
11	-	-	-	50 V 11	60 W 11	80 W 11	100 X 11
12	-	41 V 12	40 V 12	50 W 12	60 W 12	80 X 12	100 X 12
13	-	41 V 13	40 V 13	50 W 13	60 W 13	80 X 13	100 X 13
14	-	41 V 14	40 V 14	50 W 14	60 W 14	80 X 14	100 Y 14
15	35 V 15	41 V 15	40 V 15	50 W 15	60 X 15	80 X 15	100 Y 15
16	35 V 16	41 W 16	40 W 16	50 W 16	60 X 16	80 X 16	100 Y 16
17	35 V 17	41 W 17	40 W 17	50 X 17	60 X 17	80 X 17	100 Y 17
18	35 V 18	41 W 18	40 W 18	50 X 18	60 X 18	80 X 18	100 Y 18
19	35 V 19	41 W 19	40 W 19	50 X 19	60 X 19	80 X 19	100 Y 19
20	35 V 20	41 W 20	40 X 20	50 X 20	60 X 20	80 X 20	100 Y 20
21	35 V 21	41 W21	40 X 21	50 X 21	60 X 21	80 X 21	100 Y 21
22	35 W 22	41 W 22	40 X 22	50 X 22	60 X 22	80 X 22	100 Y 22
23	35 W 23	41 W 23	40 X 23	50 X 23	60 X 23	80 X 23	100 Y 23
24	35 W 24	41 W 24	40 X 24	50 X 24	60 X 24	80 X 24	100 Y 24
25	35 W 25	41 W 25	40 X 25	50 X 25	60 X 25	80 X 25	100 Y 25
26	35 W 26	41 W 26	40 X 26	50 X 26	60 X 26	80 X 26	100 Y 26
27	35 W 27	41 W 27	40 X 27	50 X 27	60 X 27	80 X 27	-
28	35 W 28	41 W 28	40 X 28	50 X 28	60 X 28	80 X 28	100 Y 28
29	35 W 29	41 W 29	40 X 29	50 X 29	60 X 29	80 X 29	-
30	35 W 30	41 W 30	40 X 30	50 X 30	60 X 30	80 X 30	100 Y 30
31	35 W 31	41 W31	40 X 31	50 X 31	60 X 31	-	-
32	35 W 32	41 W 32	40 X 32	50 X 32	60 X 32	80 X 32	100 Y 32
33	35 W 33	41 W 33	40 X 33	50 X 33	60 X 33	80 X 33	-
34	35 W 34	41 W 34	40 X 34	50 X 34	60 X 34	80 X 34	-
35	35 W 35	41 W 35	40 X 35	50 X 35	60 X 35	80 X 35	100 Y 35
36	35 W 36	41 W 36	40 X 36	50 X 36	60 X 36	80 X 36	100 Y 36
37	35 W 37	41 W 37	40 X 37	50 X 37	60 X 37	-	-
38	35 W 38	41 W 38	40 X 38	50 X 38	60 X 38	-	-
39	35 W 39	41 W 39	40 X 39	50 X 39	60 X 39	-	-
40	35 W 40	41 W 40	40 X 40	50 X 40	60 X 40	80 X 40	-
42	35 W 42	41 W 42	40 X 42	50 X 42	60 X 42	-	-
43	35 W 43	41 W 43	40 X 43	50 X 43	60 X 43	-	-
44	35 W 44	41 W44	40 X 44	50 X 44	60 X 44	-	-
45	35 W 45	41 W 45	40 X 45	50 X 45	60 X 45	80 X 45	-
48	35 W 48	41 W 48	40 X 48	50 X 48	60 X 48	80 X 48	-
50	35 W 50	41 W 50	40 X 50	50 X 50	60 X 50	-	-
54	35 W 54	41 W54	40 X 54	50 X 54	60 X 54	-	-
60	35 W 60	41 W 60	40 X 60	50 X 60	60 X 60	80 X 60	-
70	35 W 70	41 W 70	40 X 70	50 X 70	60 X 70	-	-
72	35 W 72	41 W 72	40 X 72	50 X 72	60 X 72	-	-
80	35 W 80	41 W 80	40 X 80	50 X 80	60 X 80	-	-
84	35 W 84	41 W84	40 X 84	50 X 84	60 X 84	-	-



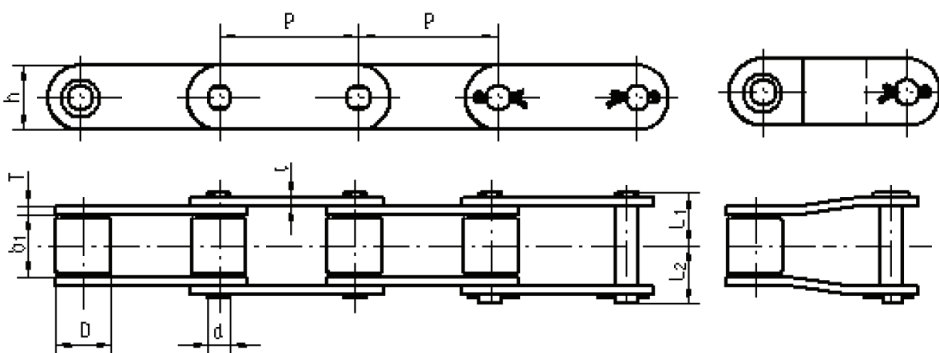
**ROUND
BORE**

Part no.	Bore Range	Dimensions				
		A	B	C	D	E
V-Hu b	1/2 to 7/8	1 1/8	1 7/16	7/16	3/4	1 3/16
W-Hu b	1/2 to 1-1/4	1 5/8	1 13/16	7/16	1	1 7/16
X-Hu b	5/8 to 1-1/2	2	2 1/2	7/16	1	1 7/16
XX-Hu b	1", 1-1/4, 1-1/2	2	3	7/16	1 1/16	1 1/2
Y-Hu b	1" to 2"	2 3/4	3 3/4	11/16	1 3/16	1 7/8
YY-Hu b	2" plain bore	2 3/4	5	11/16	1 7/16	2.1/8

Lumber Conveyor Chains 81X Series & Attachments



Chain No.	P mm	b1 (min) mm	D (max) mm	d mm	L1 mm	L2 mm	h mm	t/T mm	Qmin kN	Q0 kN	q kg/m
81X	66.27	26.99	23.02	11.1	24.5	27.8	28.6	4	106.7	128	3.8
81XH	66.27	26.99	23.02	11.1	29.6	32.7	31.4	5.6/7.5	152	175	5.83
81XHH	66.27	26.99	23.02	11.1	31.5	34.8	31.4	7.5	186.7	205	6.47



CA Series Agricultural Roller Chains

Chain No.	P mm	b1 (min) mm	D (max) mm	d mm	L1 mm	L2 mm	h mm	t/T mm	Qmin kN	Q0 kN
CA550	41.4	20.1	16.7	7.16	17.25	20.05	19.05	2.62	39.1	48.5
CA550H	41.4	20.1	16.7	7.16	18.15	20.95	19.05	3	45	54.5
CA550V	41.4	19.05	16.7	8.28	17.65	20.65	20	3	50	58
CA557	41.4	20.1	17.8	7.92	18.55	21.15	23.1	3.2	55.6	70
CA645Z	41.4	22.2	17.78	8.28	21.2	23.9	21.2	4	52.9	73.5
CA624	38.4	19.05	15.88	8.28	17.65	20.65	20.5	3	52.9	60
CA620	42.01	24.51	17.91	7.16	20.75	23.45	19.05	3.2	39.1	55



Agricultural Interchange

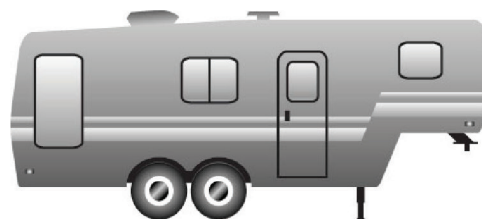
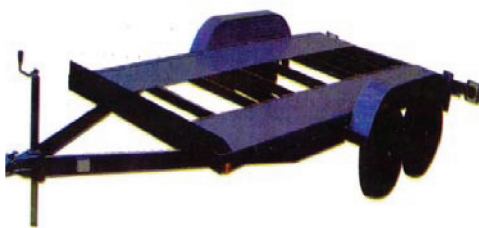
AMCAN	FAG / BCA	FAFNIR	SHAFT SIZE	O.D.	NOTES I.R.	O.R.
W208PPB13	D5208TT13	W208PPB13	8-Jul	80mm (S)	1.437"	18mm
W208PPB11	D5208TT11	W208PPB11	8-Jul	87mm (S)	1.437"	1.187"
W208PPB6	D5208TT6	W208PPB6	1	80mm (S)	1.437"	18mm
W208PP6	DC208TT6	W208PP6	1	80mm (P)	1.437"	18mm
GW208PP86	D5208TT86	GW208PP86	1	80mm (S)	1.437"	24mm
W208PPB9	D5208TT9	W208PPB9	1	80mm (S)	1.437"	1.187"
W208PP9	****	W208PP9	1	80mm (P)	1.437"	1.187"
W208K2-E9003	DC208TT2	W208K2-E9003	1	80mm (P)	1.687"	1.279"
W208K2	DC208-2	W208K2	1	80mm (P)	1.687"	18mm
W208PPB5	D5208TT5	W208PPB5	1 1/8	80mm (S)	1.437"	18mm
W208PP5	DC208TT5	W208PP5	1 1/8	80mm (P)	1.437"	18mm
GW208PP85	D5208TT85	GW208PP85	1 1/8	80mm (S)	1.437"	0.9449"
W208PPB8	D5208TT8	W208PPB8	1 1/8	80mm (S)	1.437"	1.187"
GW208PP88	D5208TT88	GW208PP88	1 1/8	80mm (P)	1.437"	1.187"
W208PP8	DC208TT8	W208PP8	1 1/8	80mm (P)	1.437"	1.187"
W208PPB12	D5208TT12	W208PPB12	1 1/8	87mm (S)	1.437"	1.187"
W210PPB4	D5210TT4	W210PPB4	1 1/8	90mm (S)	1.187"	1.187"
GW210PP84	D5210TT84	GW210PP84	1 1/8	90mm (S)	1.187"	1.187"
W210PP4	DC210TT4	W210PP4	1 1/8	90mm (S)	1.187"	1.187"
GW210PP4	DC210TT84	GW210PP4	1 1/8	90mm (S)	1.187"	1.187"
W208K3	DC208	W208K3	1 1/8	80mm (P)	1.687"	18mm
W210PP6	****	W210PP6	1 1/8	90mm (P)	1.437"	1.187"
W210PPB6	D5210TT6	W210PPB6	1 1/8	90mm (P)	1.437"	1.187"
GW208PP17	DC208TT17	GW208PP17	1 1/8	3.375" (P)	1.437"	1.187"
W208PPB19	****	W208PPB19	1 1/8	3.443" (S)	1.437"	1.187"
W208PP20	****	W208PP20	1 1/8	80mm (P)	1.437"	18mm
W208K3-E9003	DC208TT17	W208K3-E9003	1 1/8	80mm (P)	1.687"	1.279"
W208K3	DC208	W208K3	1 1/8	80mm (P)	1.687"	18mm
GW208PP8	****	GW208PP8	1 1/8	80mm (P)	1.437"	1.187"
W209PPB5	D5209TT5	W209PPB5	1 1/4	85mm (S)	1.437"	1.187"
GW209PP85	D5209TT85	GW209PP85	1 1/4	85mm (S)	1.437"	1.187"
W209PP8	D5209TT8	W209PP8	1 1/4	85mm (S)	1.437"	22mm
GW209PP88	D5209TT88	GW209PP88	1 1/4	85mm (S)	1.437"	22mm
W209PPB7	D5209TT7	W209PPB7	1 1/4	87mm (S)	1.437"	1.187"
(* Flat area on OD)						
W211PPB3	D5211TT3	W211PPB3	1 1/2	100mm (S)	1.312"	1.312"
GW211PP83	D5211TT83	GW211PP83	1 1/2	100mm (S)	1.312"	1.312"
W211PP3	DC211TT3	W211PP3	1 1/2	100mm (S)	1.312"	1.312"
GW211PP3	DC211TT83	GW211PP3	1 1/2	100mm (S)	1.312"	1.312"
W211PP5	DC211TT5	W211PP5	1 1/2	4.000" (P)	1.750"	1.437"
W211PPB6	DS211TT6	W211PPB6	1 1/2	4.125" (S)	1.750"	1.437"
(* Flat area on OD)						
GW211PP811	****	GW211PP811	1 1/2	100mm (S)	1.750"	25mm
W211PPB29	****	W211PPB29	40mm	100mm (S)	1.312"	25mm
W211PP30	DC211TT40A	W211PP30	40mm	100mm (P)	1.312"	0.9375"
W211PPB30	****	W211PPB30	40mm	100mm (S)	1.312"	25mm
W211PP34	DC211TT40	W211PP34	40mm	4.000"		
GW211PP35	DC211TT26	GW211PP35	40mm			
GW216PP84	****	GW216PP84	1 3/4	140mm (S)	63.5mm	30mm
GW214PP84	****	GW214PP84	2	125mm (S)	1.562"	1.562"
GW216PP82	****	GW216PP82	2 1/4	140mm (S)	63.5mm	30mm
W208PPB14	D5208TT14	W208PPB14	8-Jul	3.438" (S)	1.437"	1.187"
W208PP4	****	W208PP4	1 3/16	80mm (P)	1.187"	1.187"
W208PPB7	D5208TT7	W208PPB7	1 3/16	80mm (S)	1.187"	18mm
W208PP7	DC208TT7	W208PP7	1 3/16	80mm (S)	1.187"	18mm
W208PPB4	D5208TT4	W208PPB4	1 3/16	80mm (S)	1.187"	1.187"
GW210PP3	DC210TT3	GW210PP3	1 3/16	90mm (P)	1.187"	1.187"
W208PP2	****	W208PP2	1 1/2	80mm (P)	1.687"	1.687"
W210PP8	****	W210PP8	1 1/2	90mm (P)	1.187"	1.187"
W208PP10	DC208TT10	W208PP10	1 1/2	80mm (P)	1.687"	21mm
W208PPB2	D5208TT2A	W208PPB2	1 1/2	80mm (S)	1.687"	1.187"
GW208PP82	****	GW208PP82	1 1/2	80mm (S)	1.687"	1.187"
W209PPB4	D5209TT4	W209PPB4	1 1/2	85mm (S)	1.187"	1.187"
GW209PP84	D5209TT84	GW209PP84	1 1/2	85mm (S)	1.187"	1.187"
W209PPB6	D5209TT6	W209PPB6	1 1/2	3.438" (S)	1.187"	1.187"
GW211PP4	****	GW211PP4	1 5/8	100mm (P)	1.312"	1.312"
W209PPB2	D5209TT2	W209PPB2	45mm	85mm (S)	1.187"	1.187"
GW209PP82	D5209TT82	GW209PP82	45mm	85mm (S)	1.187"	1.187"
GW209PP811	D5209TT811	GW209PP811	45mm	85mm (S)	1.437"	22mm
W210PPB5	D5210TT5	W210PPB5	1 3/4	90mm (S)	1.187"	1.187"
GW210PP85	D5210TT85	GW210PP85	1 3/4	90mm (S)	1.187"	1.187"
GWPPB13	****	GWPPB13	1 3/4	100mm (S)	1.312"	25mm
W210PPB2	D5210TT2	W210PPB2	1 15/16	90mm (S)	1.187"	1.187"
GW210PP82	D5210TT82	GW210PP82	1 15/16	90mm (S)	1.187"	1.187"
GW210PP2	DC210TT2	GW210PP2	1 15/16	90mm (P)	1.187"	1.187"
RMK1115K	DC210	RMK1115K	1 15/16	90mm (P)	1.937"	20mm
GW210PP89	****	GW210PP89	1 15/16	90mm (S)	1.437"	23mm
GW211PP810	****	GW211PP810	1 15/16	100mm (S)	1.312"	1.312"
GW211PP814	****	GW211PP814	2	100mm (S)	1.312"	25mm
W210PP2	DC210TT2	W210PP2	2 3/16	90mm (P)	1.187"	1.187"
W211PPB2	D5211TT2	W211PPB2	2 3/16	100mm (S)	1.312"	1.312"
GW211PP82	D5211TT82	GW211PP82	2 3/16	100mm (S)	1.312"	1.312"
W211PP2	DC211TT2	W211PP2	2 3/16	100mm (S)	1.312"	1.312"
GW211PP88	****	GW211PP88	2 3/16	100mm (S)	1.312"	25mm
GW211PP89	****	GW211PP89	2 3/16	100mm (S)	1.312"	25mm
GW214PP86	****	GW214PP86	2 11/16	125mm (S)	1.562"	1.562"
W214PP2	DC214TT2G	W214PP2	2 3/4	125mm (P)	1.562"	1.562"
W214PPB2	****	W214PPB2	2 3/4	125mm (P)	1.562"	1.562"
GW214PP82	****	GW214PP82	2 3/4	125mm (P)	1.562"	1.562"
GW214PP85	D5214TT85	GW214PP85	70MM	125mm (S)	2.437"	1.562"
GW216PP83	****	GW216PP83	3	140mm (S)	63.5mm	30mm
W315PP2	****	W315PP2	3	160mm (P)	2.687"	2.687"



Each Kit contains:

- 2 Tapered Roller Bearings
- 1 Oil Seal
- 1 Cotter Pin
- 1 Grease Pouch
- Mounting Instruction

Kit No.	AXLE
AMTL 1000	1"
AMTL 1063	1 1/6"
AMTL 3500	3500 Lbs.





AGRICULTURAL BEARINGS

*Roulements pour machinerie
agricole*

7 DISTRIBUTION CENTERS ACROSS NORTH AMERICA

Los Angeles

Tel: 562-848-6203
Toll Free: 1-800-434-6203

Chicago

Tel: 630-458-8700
Toll Free: 1-866-625-6203

Dallas

Tel: 214-420-9115
Toll Free: 1-888-477-6203

Toronto

Tel: 905-624-9948
Toll Free: 1-877-275-6304

Montréal

Tel: 514-342-6202
Toll Free: 1-866-349-6304

Edmonton

Tel: 780-486-6210
Toll Free: 1-877-454-6203

Vancouver

Tel: 604-941-6203
Toll Free: 1-866-941-6203

www.amcanbearing.com

Email: ussales@amcanbearing.com sales@amcanbearing.com

